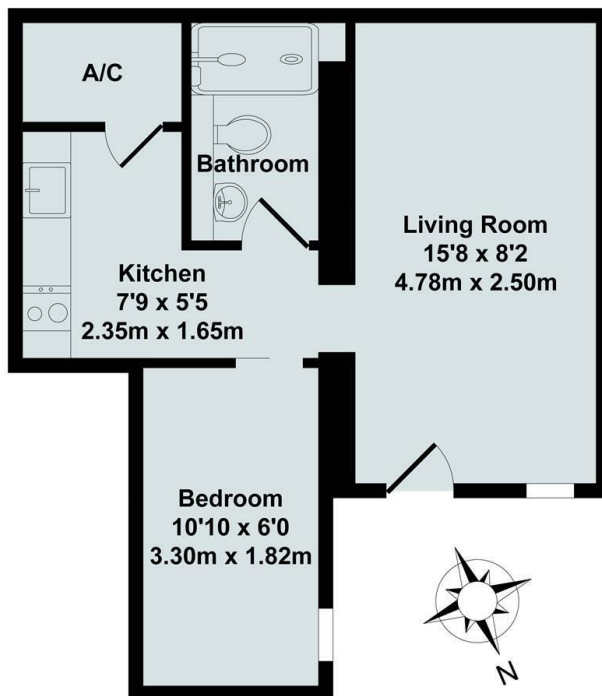




## Plot 14, Building 32, The Parade, Caversfield, Bicester, OX27

£895 PCM - 10th January 2026.

- One bedroom basement apartment
- Shower room
- Council Tax Band A
- Mains electricity and water
- Available unfurnished
- Electric oven/hob, fridge & dishwasher included
- Parking for one car
- Small single bedroom
- EPC rating E
- Suitable for a SINGLE OCCUPANT only



Total Approx. Floor Area 329 Sq.Ft. (30.60 Sq.M.)  
All items illustrated on this plan are included in the "Total Approx Floor Area"

## Directions

## Viewings

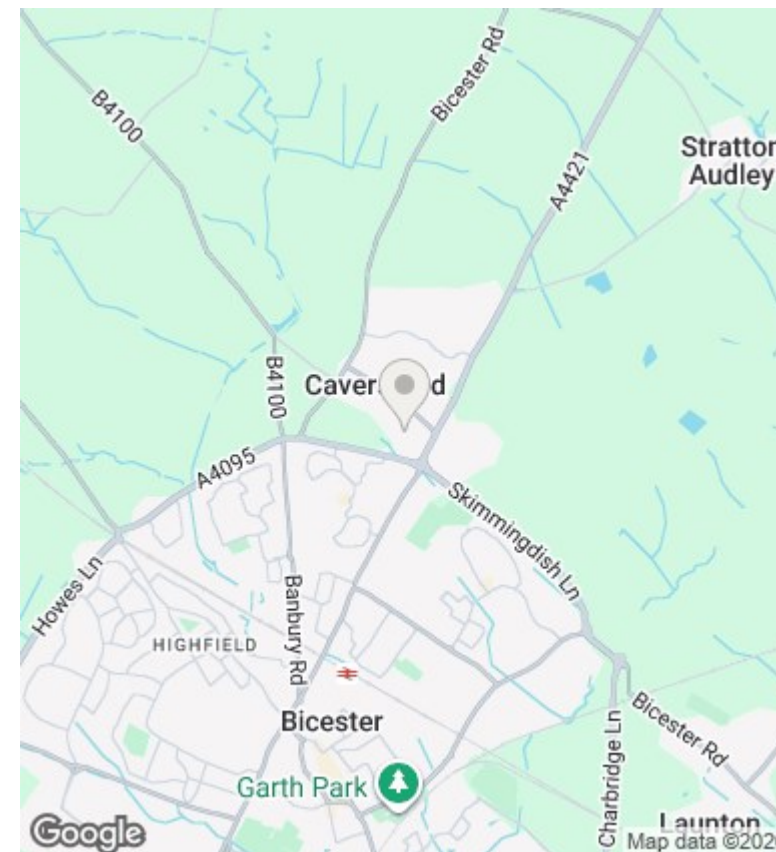
Viewings by arrangement only. Call 01869 226888 to make an appointment.

## Council Tax Band

A

## EPC Rating:

C



Energy Efficiency Rating		
	Current	Potential
Very energy efficient - lower running costs		
(92 plus) <b>A</b>		
(81-91) <b>B</b>		
(69-80) <b>C</b>	78	79
(55-68) <b>D</b>		
(39-54) <b>E</b>		
(21-38) <b>F</b>		
(1-20) <b>G</b>		
Not energy efficient - higher running costs		
<b>England &amp; Wales</b>	EU Directive 2002/91/EC	